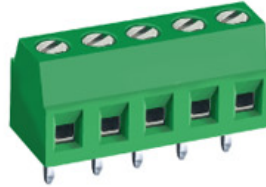


MB 332-381A Single mold



Pitch: 3.81mm(0.150inch)

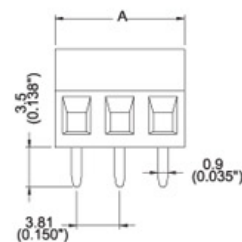
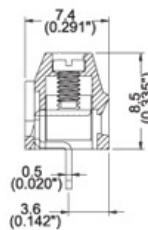
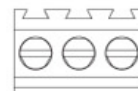


SPECIFICATIONS

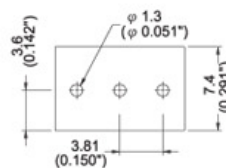
			CUL	VDE
負載電壓	Rated Voltage	Bemessungsspannung	AC 300V	
負載電流	Rated Current	Bemessungsstrom	10A	
電線線徑	Wire Size	Leitergrößen	26~16AWG	
塑膠本體	Housing Material	Isolierstofftyp	Polyamide66(UL94V-0)	
押線圈	Cage Clamp	Klemmkörper	Brass, Ni plated	
端子	Terminal	Stiftmaterial	Brass, Tin plated	
螺絲	Screw Size	Schraubengewinde	M2.0, steel, Ni plated	
操作溫度	Operating Temperature	Umgebungstemperatur	-40°C to + 105°C	
扭力	Torque	Anzugsmoment	2.0 lb-inch	
PC板孔徑	PCB Hole Diameter	Lochdurchmesser	φ 1.3mm	
UL File No.	E167040			

TABLE

Item No.	A(mm)	A(inch)
MB332-381A02	7.6	0.300
MB332-381A03	11.4	0.450
MB332-381A04	15.2	0.600
MB332-381A05	19.1	0.750
MB332-381A06	22.9	0.900
MB332-381A07	26.7	1.050
MB332-381A08	30.5	1.200
MB332-381A09	34.3	1.350
MB332-381A10	38.1	1.500
MB332-381A11	41.9	1.650
MB332-381A12	45.7	1.800
MB332-381A13	49.5	1.950
MB332-381A14	53.3	2.100
MB332-381A15	57.2	2.250
MB332-381A16	61.0	2.400



PCB Layout



Note:
Screw Plating: Changes are available upon request